



MONTHLY MEMBERSHIP PROGRESS REPORT

District 105 E

Results as of: 5/31/2015

GMT: Elisabeth Haderer

LOCATION ENGLAND

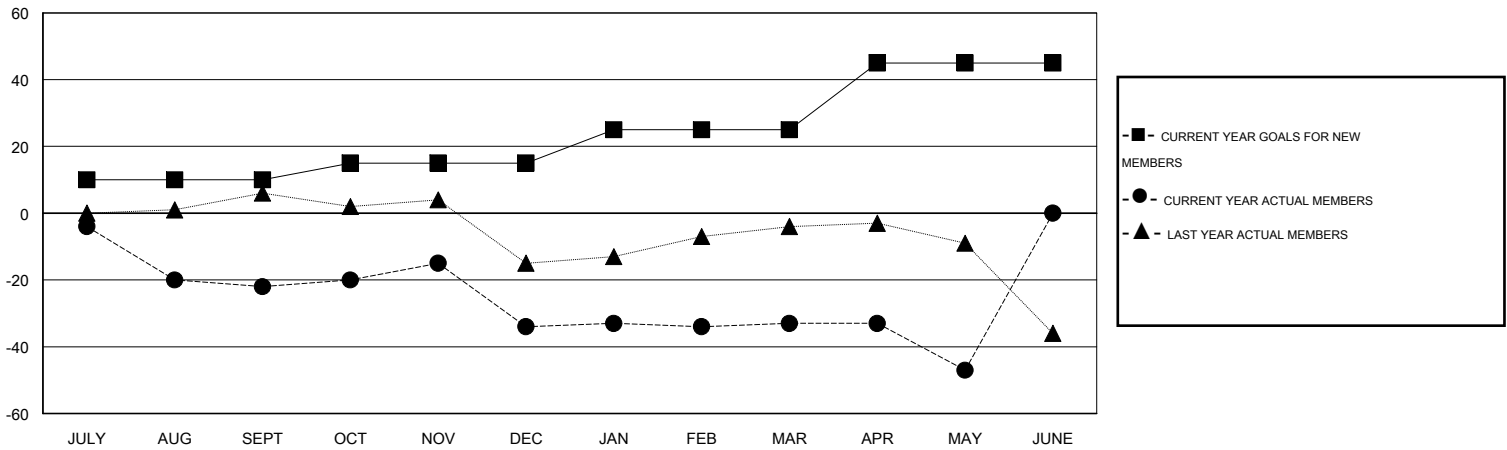
GMT CA 4

Clubs					Members				
RESULTS FOR 2014-2015					RESULTS FOR 2014-2015				
QUARTER	NEW CLUB GOAL	NEW CLUBS	DROPPED CLUBS	NET GAIN/LOSS	QUARTER	NEW MEMBER GOAL	CHARTER AND NEW MEMBERS ADDED	DROPPED MEMBERS	NET GAIN/LOSS
JULY/AUG/SEPT	0	0	2	-2	JULY/AUG/SEPT	10	12	34	-22
OCT/NOV/DEC	0	0	0	0	OCT/NOV/DEC	5	21	33	-12
JAN/FEB/MAR	0	0	1	-1	JAN/FEB/MAR	10	27	26	1
APR/MAY/JUNE	1	0	0	0	APR/MAY/JUNE	20	9	23	-14

GOALS AND ACTUAL NEW CLUBS CUMULATIVE



GOALS AND ACTUAL MEMBERS CUMULATIVE



DROPPED CLUBS: 3	33 CLUBS OF 59 ADDED 1 OR MORE NEW MEMBERS	<u>GENDER DISTRIBUTION</u>	
		MALE	841 (76.52%)
<u>DROPPED MEMBERS</u>	CLICK HERE FOR HEALTH ASSESSMENT DATA	FEMALE	258 (23.48%)
DECEASED		9	FAMILY UNIT MEMBERS
CLUB CANCELLED	0	HEAD OF HOUSEHOLD	77
OTHER	107	NON-HEAD OF HOUSEHOLD	82
TOTAL	116		